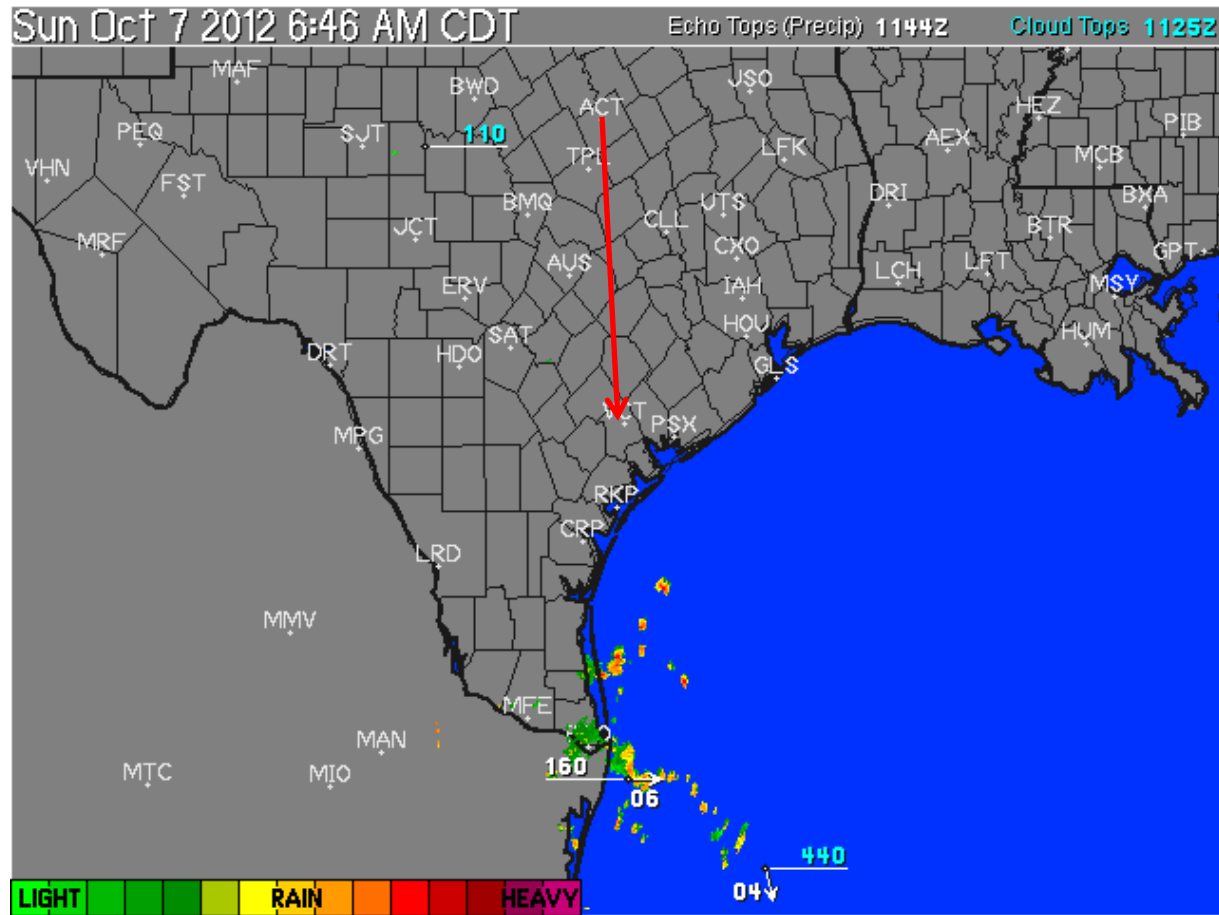


Flight Plan Example

Gary White

Route and Plan

- Waco to Victoria
- Altitude 5,500'
- Quick Radar Check
- Planned Departure Time = 0830 CDT
- Route = Direct Using GPS



Flight Plan from DUATs

From: KACT -- Waco TX (Waco Rgnl)
 To: KVCT -- Victoria TX (Victoria Rgnl)
 Alt.: 5,500 ft. Profile: N952TS
 Time: Sun Oct 7 13:30 (UTC)

Routing options selected: Direct.

Flight plan route:

Direct

Flight totals: fuel: 11 gallons, time: 1:47, distance 166.4 nm.

Ident	Type/Morse Code	Name or Fix/radial/dist	Latitude	Longitude	Alt.	Route	Mag	KTS	Fuel	Fuel
						Winds	Crs	TAS	Time	Dist
						Temp	Hdg	GS	Time	Dist
1.	KACT Apt.	Waco TX (Waco Rgnl)	31:36.7	97:13.8	5	Direct			10.9	166
						207/3	167	96	1:47	
2.	KVCT Apt.	Victoria TX (Victoria R	28:51.2	96:55.1	1	+16C	168	93	166	10.9
										1:47
										0

Winds Aloft

Performance Data

Departure Weather at KACT

Waco TX (Waco Rgnl) [KACT] hourly observation on the 7th at 5:51am CDT (1051Z)
wind 020° at 10 knots, visibility 10 miles, 4,900 feet overcast, temperature 9°C (48°F), dewpoint 3°C (37°F), altimeter 30.25, automated station with precipitation discriminator, sea level pressure 30.24" Hg (1024.2 hPa), temperature 9.4°C (48.9°F), dewpoint 3.3°C (37.9°F), maintenance required.

Waco TX (Waco Rgnl) [KACT] *amended* terminal forecast

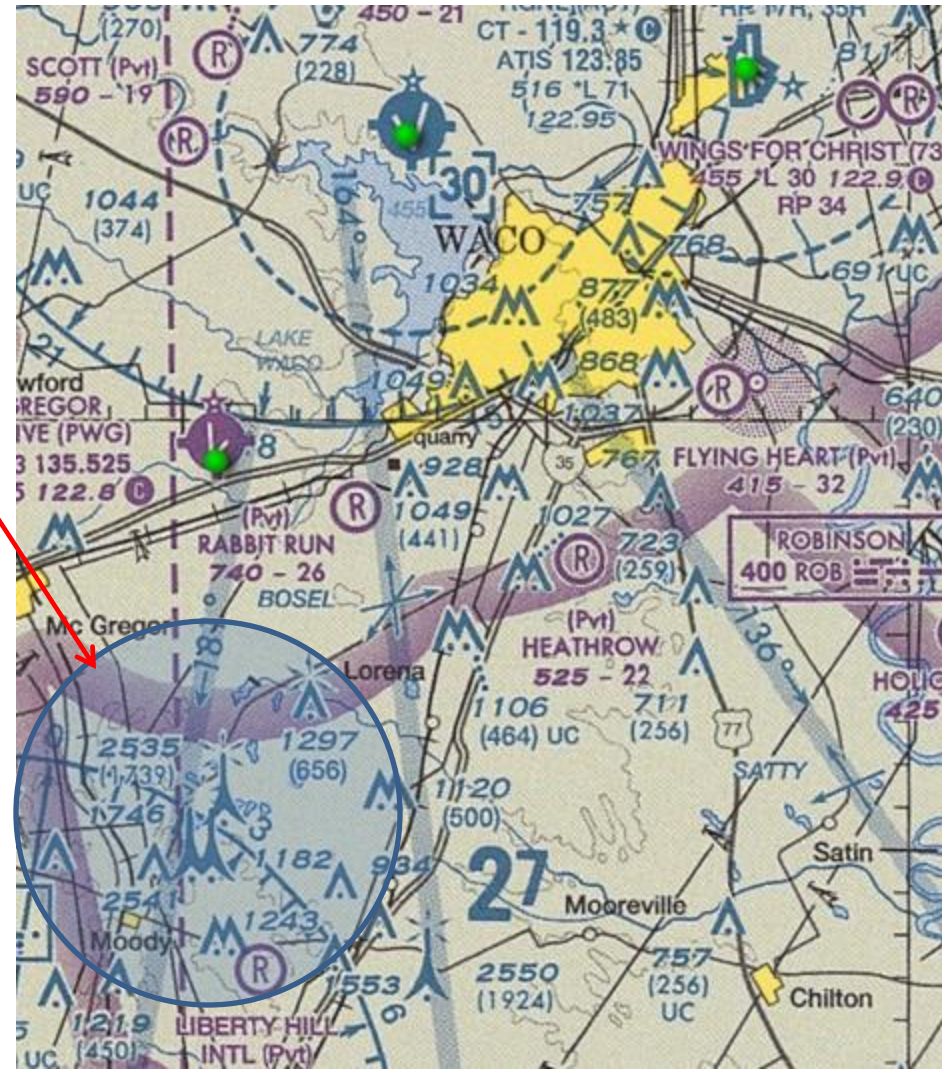
issued on the 7th at 4:05am CDT (0905Z), valid from the 7th at 4am CDT (09Z) through the 8th at 1am CDT (06Z)

4am CDT (09Z)	wind 030° at 13 knots, visibility greater than 6 miles, 2,000 feet scattered, 4,000 feet overcast
10:00am CDT (1500Z)	wind 030° at 14 knots, visibility greater than 6 miles, 5,000 feet overcast.

Any Thoughts About How Viable This Flight Might Be?

Adjustments

- Lower Cruise to 3,500'
- Caution on Climb Out – Towers SSW of Airport



But Look at KVCT

Victoria TX (Victoria Rgnl) [KVCT] automated hourly observation on the 7th at 5:51am CDT (1051Z) wind 020° at 11 knots gusting to 18 knots, visibility 10 miles, 1,800 feet overcast, temperature 15°C (59°F), dewpoint 11°C (52°F), altimeter 30.11, automated station with precipitation discriminator, sea level pressure 30.11" Hg (1019.6 hPa), temperature 15.0°C (59.0°F), dewpoint 10.6°C (51.1°F), maintenance required.

Victoria TX (Victoria Rgnl) [KVCT] *amended* terminal forecast

issued on the 7th at 1:20am CDT (0620Z), valid from the 7th at 1am CDT (06Z) through the 8th at 1am CDT (06Z)

1am CDT (06Z)

wind 020° at 14 knots gusting to 20 knots, visibility greater than 6 miles, 1,700 feet broken, 2,700 feet overcast

Any More Thoughts About How Viable This Flight Might Be?

Lower Ceiling at KVCT

- While 3,500' Might be a Good Initial Cruise – at Some Portion of Flight Will Need to Descend Lower
- Look at Area Forecast

Area Forecast

South Central Texas

Coastal bend middle coastal plain ... 2,000 feet overcast, tops 6,000 feet. Wind north gusting to 25 knots. Outlook: marginal VFR due to ceilings ... until 7pm CDT (00Z) wind.

Lower coastal plain ... 3,500 feet broken, tops 6,000 feet. Wind north gusting to 25 knots. 11am CDT (16Z) 2,500 feet broken, tops 7,000 feet.

Isolated light rain showers. Outlook: marginal VFR due to ceilings.

Lower Rio Grande valley ... 4,000 feet scattered. 1pm CDT (18Z) 2,000 feet broken, tops 6,000 feet. Isolated light rain showers. Outlook: marginal VFR due to ceilings.

Hill country ... 2,500 feet overcast, tops 7,000 feet. 2pm CDT (19Z) 4,000 feet broken. Outlook: VFR.

Remainder north line 50°N Laredo TX [LRD] - Corpus Christi TX [CRP] ... 1,500 feet to 2,000 feet broken, tops 6,000 feet. Outlook: marginal VFR due to ceilings.

50°N lower - Corpus Christi TX [CRP] southward ... 3,500 feet broken, tops 6,000 feet. 7am CDT (12Z) 2,000 feet broken, tops 6,000 feet. Wind north gusting to 25 knots. Outlook: marginal VFR due to ceilings.

Initial Summary

- Flight CANNOT be Made Safely as Initially Planned
- WX at Departure (ceiling) Requires Lower Cruise Altitude
- Decreasing Ceiling Along Route Dictates Descent

Any Additional Thoughts About How Viable This Flight Might Be?

Lets Look for SIGMETs and AIRMETS

Dallas-Fort Worth AIRMET, prepared on the 7th at 3:45am CDT (0845Z).

AIRMET Sierra update 1 for IFR and mountain obscuration valid until the 7th at 10:00am CDT (1500Z).

AIRMET -- IFR

For Texas, and coastal waters

From 50 miles west of Wink TX [INK]

to 20 miles east-northeast of Fort Stockton TX [FST]

to 70 miles west-southwest of Waco TX [ACT]

to 50 miles west-southwest of Lufkin TX [LFK]

to 40 miles west of Lake Charles LA [LCH]

to 120 miles south-southwest of Lake Charles LA [LCH]

to 80 miles east of Brownsville TX [BRO]

to Brownsville TX [BRO]

to 30 miles south of Corpus Christi TX [CRP]

to 40 miles west-southwest of Palacios TX [PSX]

to 30 miles east of Del Rio TX [DLF]

to 60 miles west-northwest of Del Rio TX [DLF]

to 80 miles southeast of Marfa TX [MRF]

to 40 miles west-northwest of Marfa TX [MRF]

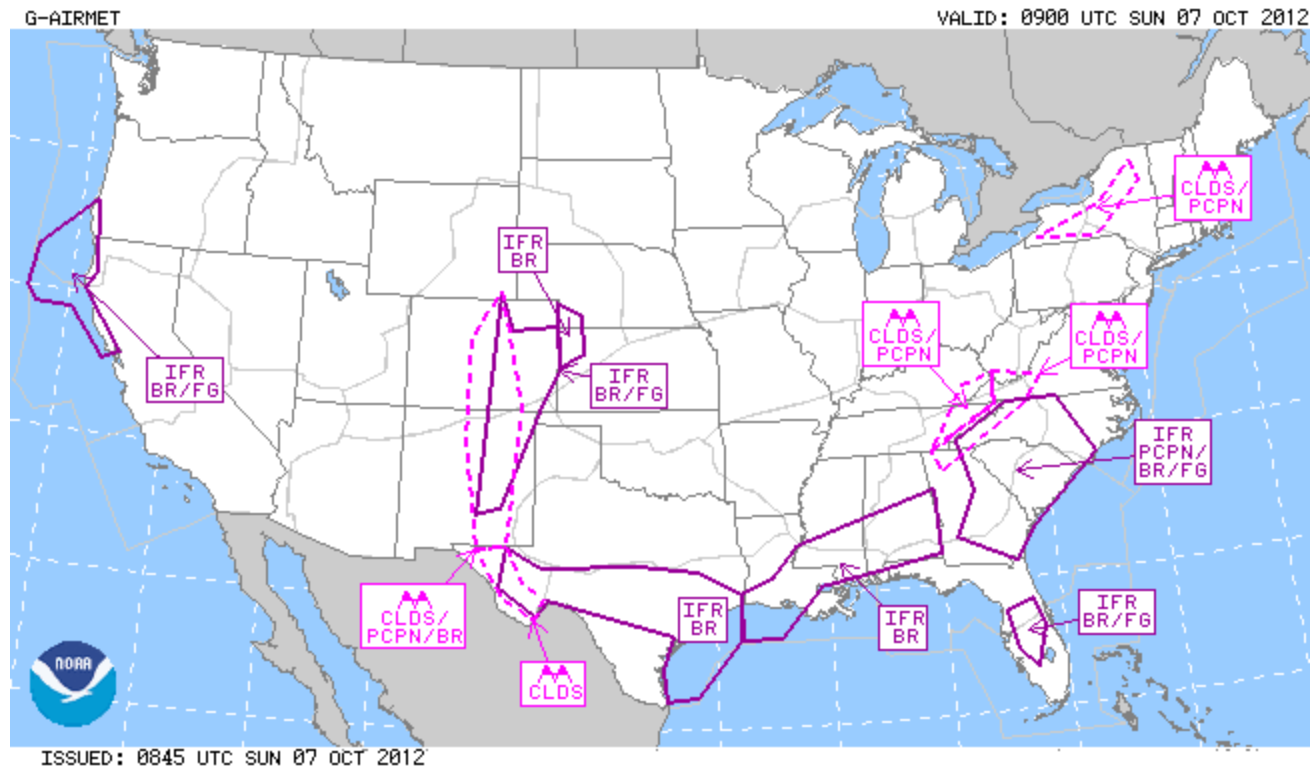
to 50 miles west of Wink TX [INK]

Ceiling below 1,000 feet / visibility below 3 statute miles in mist.

Conditions continuing beyond 10am CDT (15Z) ending 10am CDT (15Z) to 1pm CDT (18Z).

AIRMET Graphically

- Part of Route Forecast to be IFR
- What Type of Weather Might Be Associated with This AIRMET ?



Final Summary

- What Might be Likelihood of Completing This Flight Legally?
- Safely?
- What are Personal Go/No-Go Criteria You Might Establish ?
 - Visibility
 - Ceiling
 - Winds